

Elevated Crossing Tower



Builders' Guide

Original Design by Tim Warris



Fast Tracks Builders' Guide UG19

The latest version of this Builders' Guide is always available for download from the Fast Tracks website at: www.handlaidtrack.com/documents.php.

This document has been designed to be printed on both sides of the paper and bound using spiral or cerlox binding.

This document may be freely reproduced as long as it is printed or electronically duplicated in its entirety without modification and is not made part of another document.

Written & Published by

Fast Tracks
Quadica Developments Inc,
47 6th Concession Rd.
Brantford, Ontario N3T 5L7
Canada

Email: service@fast-tracks.net
Phone: 1-888-252-3895
Web: www.fast-tracks.net

This document was last updated on November 18, 2008

All content & images are copyright © 2008 Fast Tracks, All rights reserved.

DISCLAIMER: While we have made every effort to ensure that this users' guide is accurate, we cannot guarantee it to be 100% free from errors or inaccuracies. QUADICA DEVELOPMENTS INC., NOR ANY OF THEIR EMPLOYEES SHALL NOT BE LIABLE FOR ANY DAMAGES INCLUDING, BUT NOT LIMITED TO, DIRECT, INDIRECT, SPECIAL, INCIDENTAL OR CONSEQUENTIAL DAMAGES OR OTHER LOSSES ARISING OUT OF THE USE OF OR INABILITY TO USE ANY FAST TRACKS PRODUCT.

Thank You For Buying Fast Tracks Products!

Fast Tracks was born out of my frustration with building accurate and reliable track switches by hand. I just felt that there had to be a better way. So after a lot of experimenting and trial and error I came up with a solution that worked so well, that I decided to offer track assembly fixtures for sale to other model railroaders.

Since then Fast Tracks continues to grow and evolve and now offers a host of products and supplies for the model railroader. We are not a big company. We are just a small family business that I hope will help offset some of the costs of my real passion - building model railroads. I have spent a lot of time 'sweating the details' and have worked hard to produce the highest quality product possible. If you are not 100% satisfied with your Fast Tracks product, or are not getting the results that you expected, then please contact me directly at service@handlaidtrack.com and I will try and help you out, or arrange to refund your money.

If you are happy with your Fast Tracks product, then please tell your friends! Despite our hyper-linked and over-connected society, I still rely mostly on satisfied customers and word of mouth to promote my products.

You will always find the latest version of these instructions on the Fast Tracks website at www.handlaidtrack.com/documents.php. I would suggest that you bookmark this address in your browser so that if you ever misplace or wear out these instructions you will be able to download another copy from our website.

We also maintain an online discussion forum about Fast Tracks products on our website at www.handlaidtrack.com/forums. There you will find a host of information & advice from myself and other customers. Why not drop by and tell us how you are making out with your hand laid track project?

I also publish a personal blog on the Internet at www.bronx-terminal.com. I regularly post images, videos and comments about the progress I am making with my personal projects, so stop by and have a look!

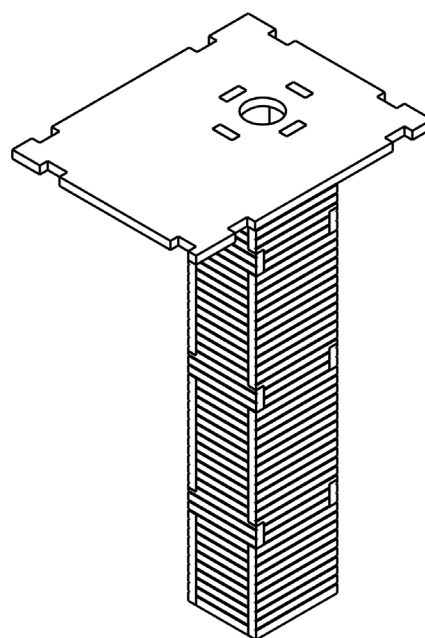
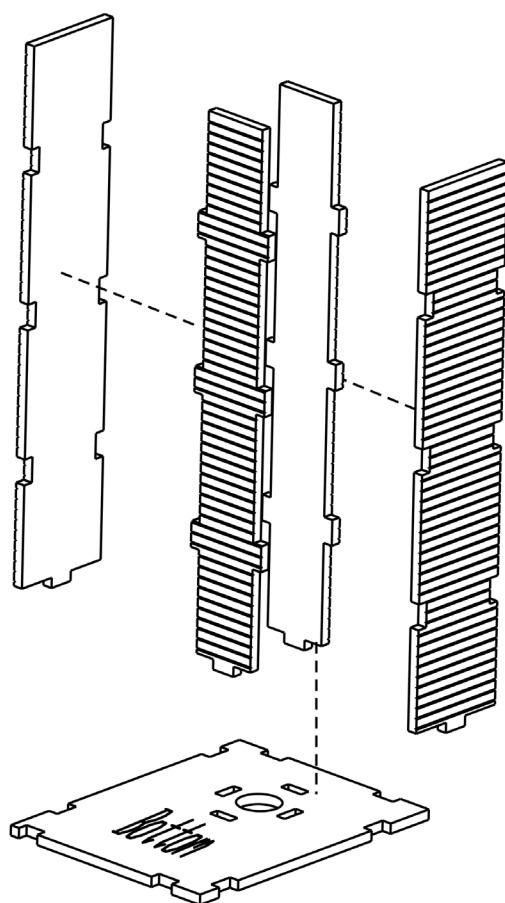
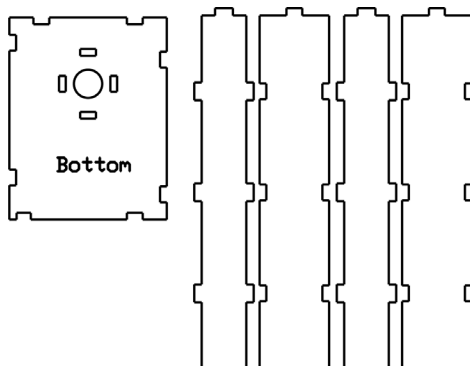
Again, thank you for your purchase. And please do not hesitate to contact me if you have any questions or problems with your product. I will do my best to reply within one business day.

Tim Warris & the staff of Fast Tracks
service@fast-tracks.net
www.fast-track.net



Tools & Supplies That You Will Need

1. Xacto Knife
2. Carpenters wood glue
3. Pliobond with micro tip(to glue window glazing in place)
4. Cyanoacrylate adhesive (*Crazy Glue*)
5. 150 grit sandpaper glued to board (for cleaning up laser cut edges)
6. Tweezers
7. Small Glue applicators
8. Your favorite brand of paint
9. about 8 hours of time



Construction Part 1

ELEVATED CROSSING TOWER

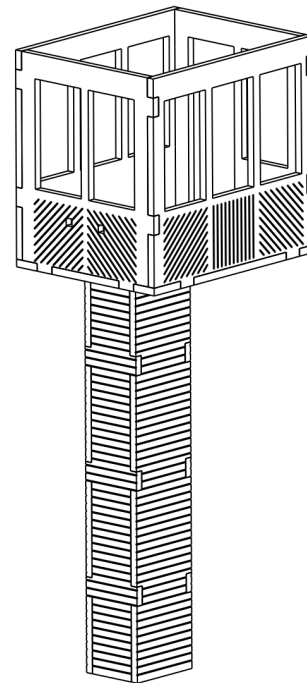
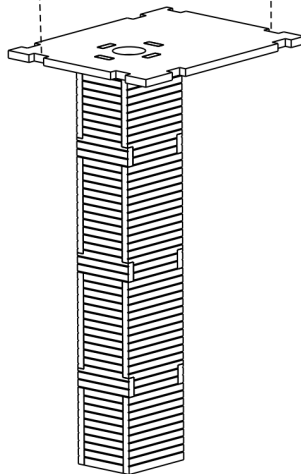
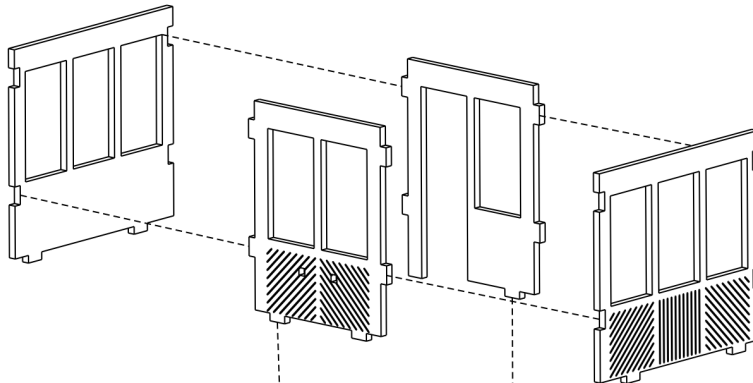
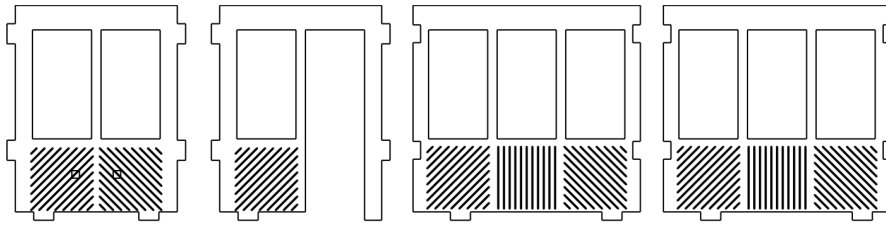
Designed By: T. Warris

August 2008

www.fast-tracks.net

Fast Tracks





Construction Part 2

ELEVATED CROSSING TOWER

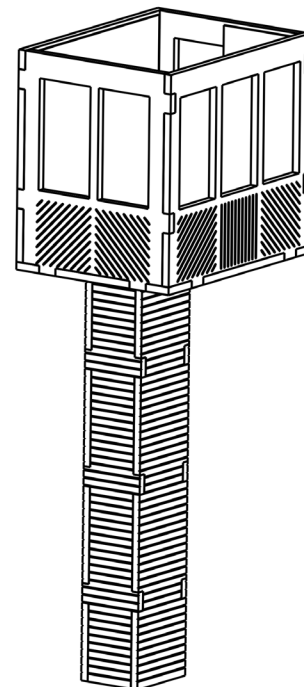
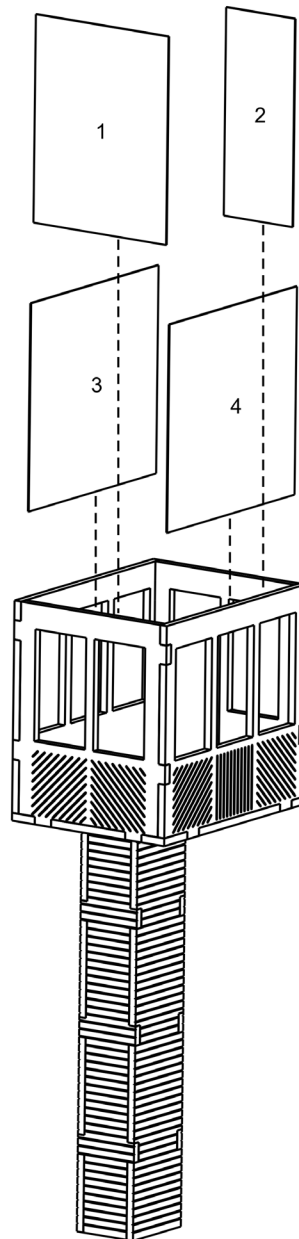
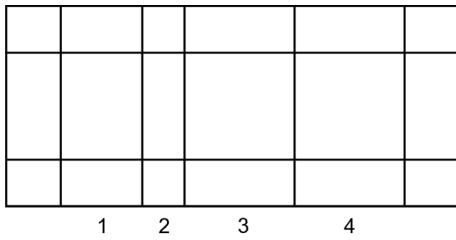
Designed By: T. Warris

August 2008

www.fast-tracks.net

Fast Tracks





Construction Part 3

ELEVATED CROSSING TOWER

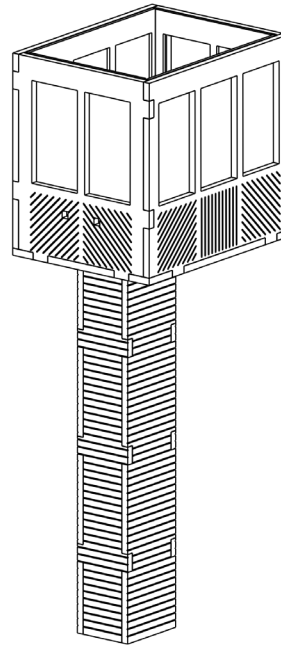
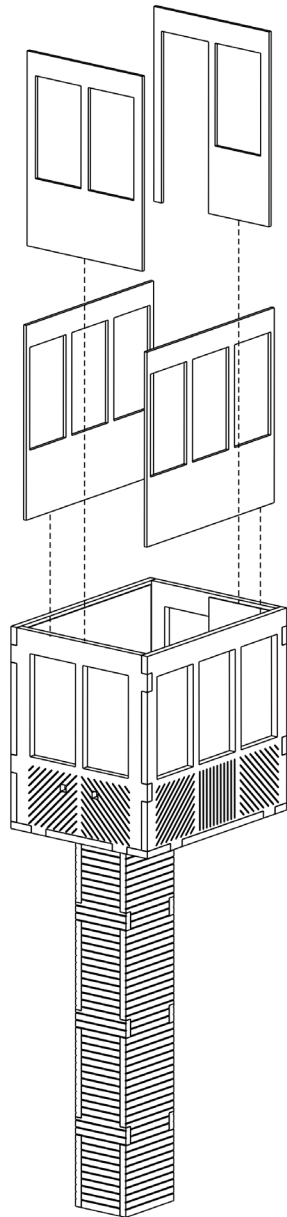
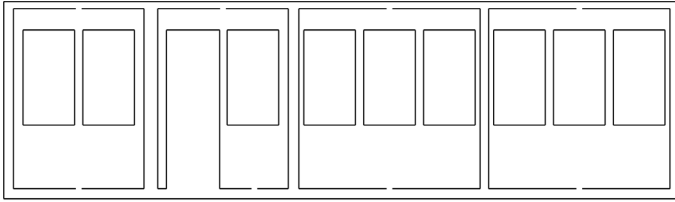
Designed By: T. Warris

August 2008

www.fast-tracks.net

Fast Tracks





Construction Part 4

ELEVATED CROSSING TOWER

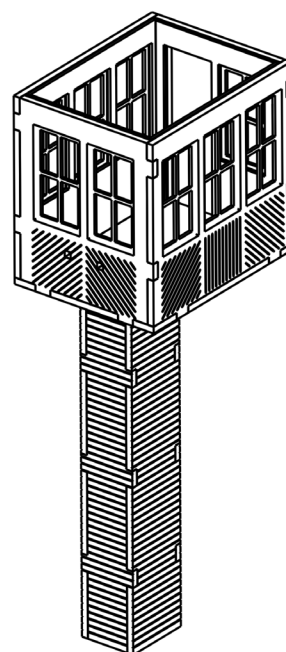
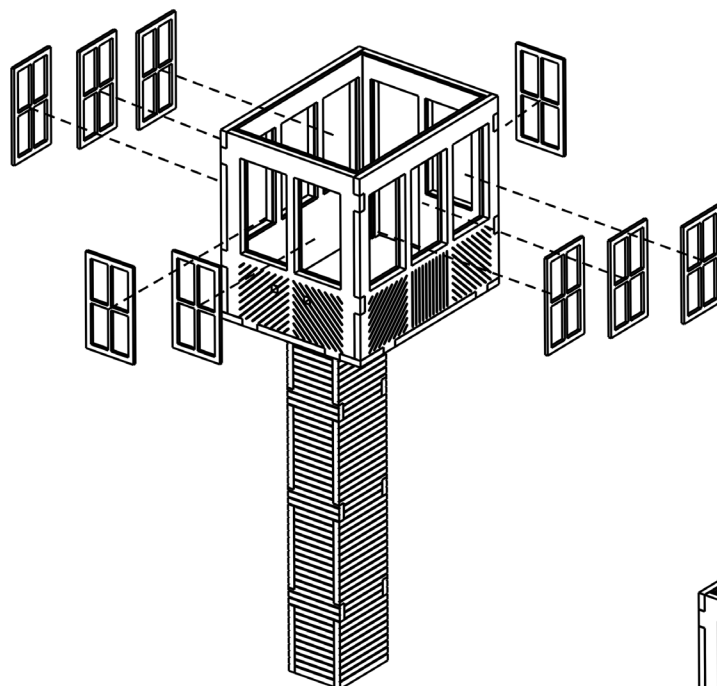
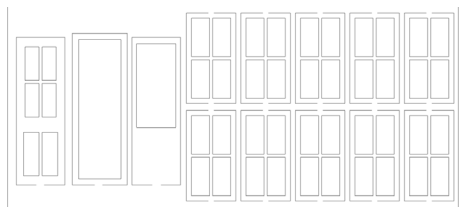
Designed By: T. Warris

August 2008

www.fast-tracks.net

Fast Tracks





Construction Part 5

ELEVATED CROSSING TOWER

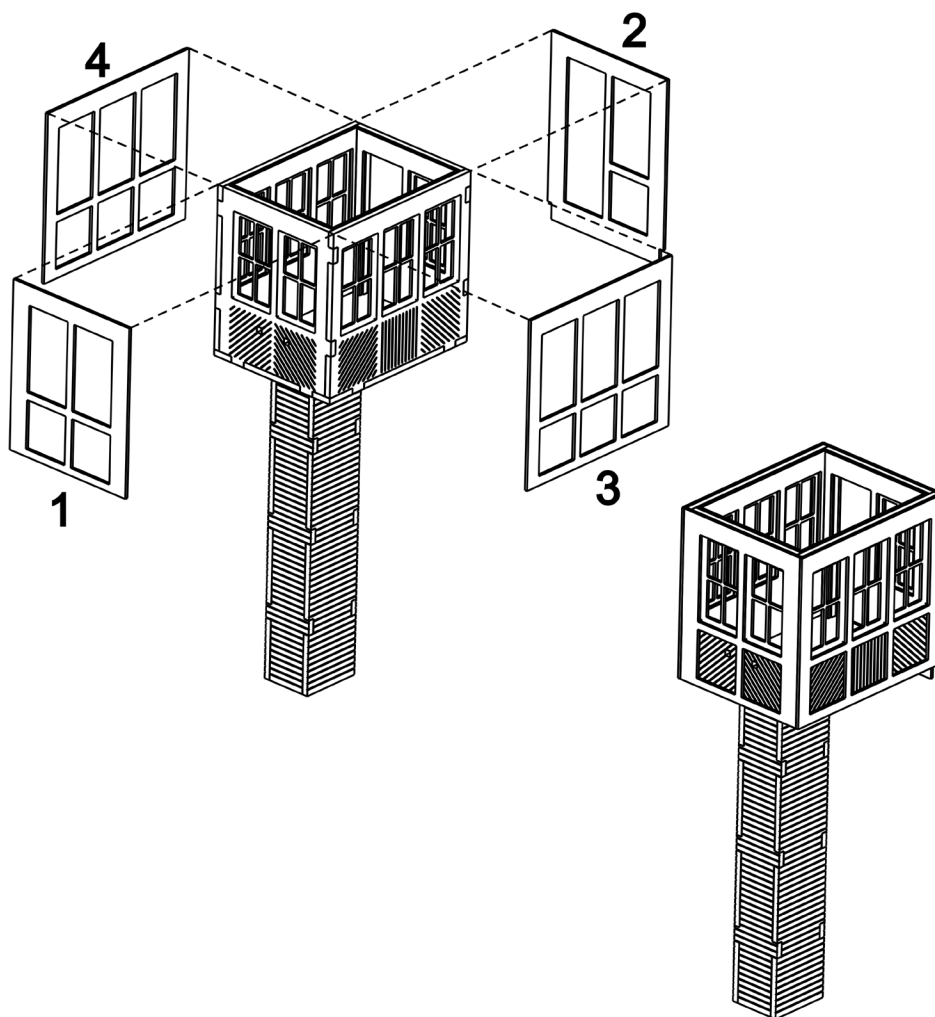
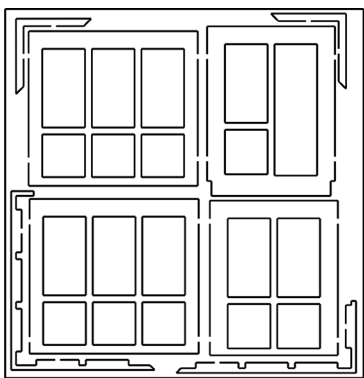
Designed By: T. Warris

August 2008

www.fast-tracks.net

Fast Tracks





Construction Part 6

ELEVATED CROSSING TOWER

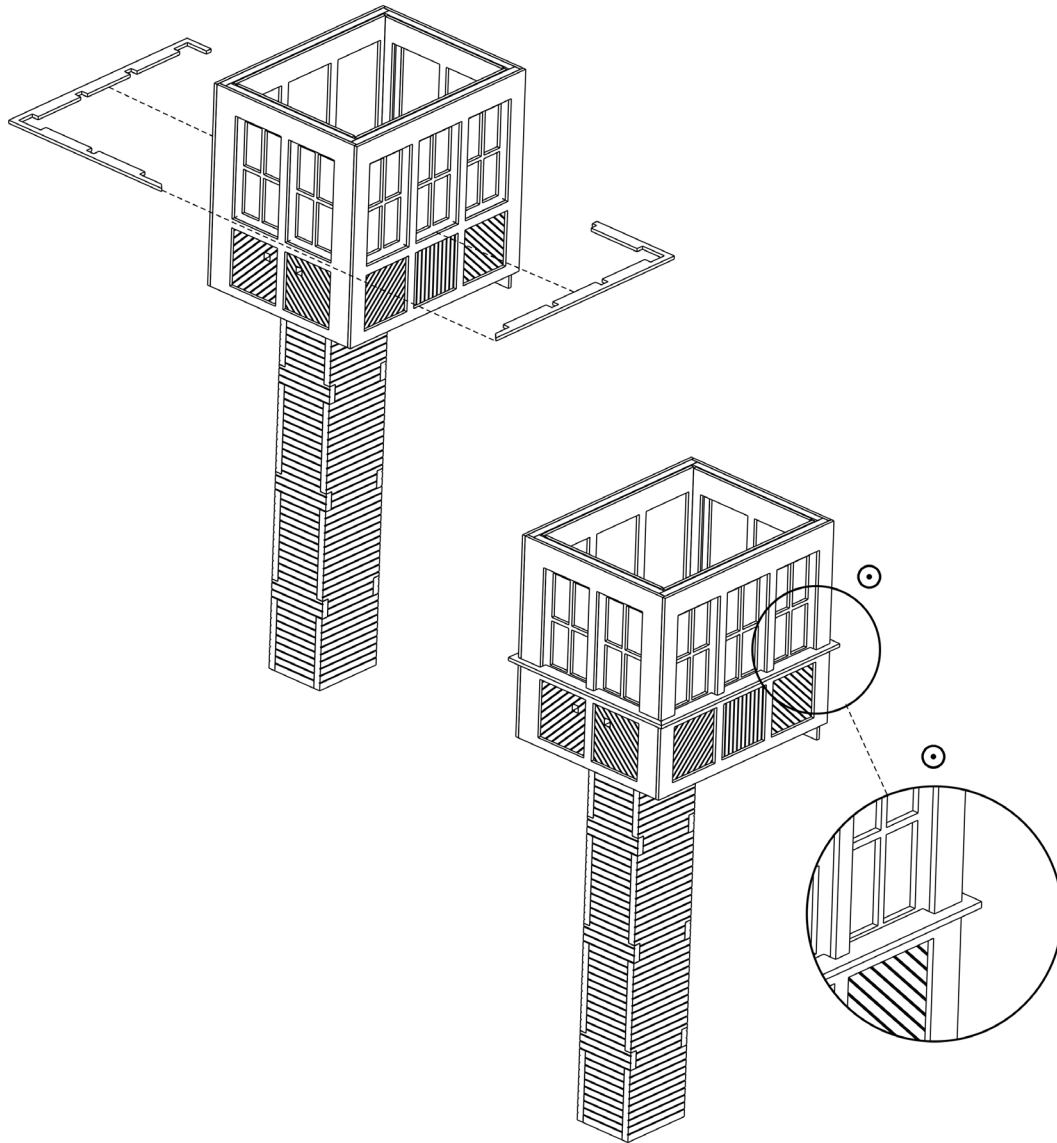
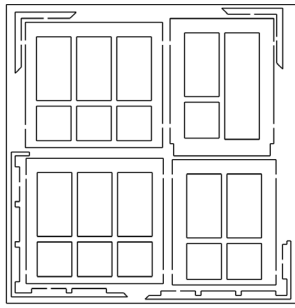
Designed By: T. Warris

August 2008

www.fast-tracks.net

Fast Tracks





Construction Part 7

ELEVATED CROSSING TOWER

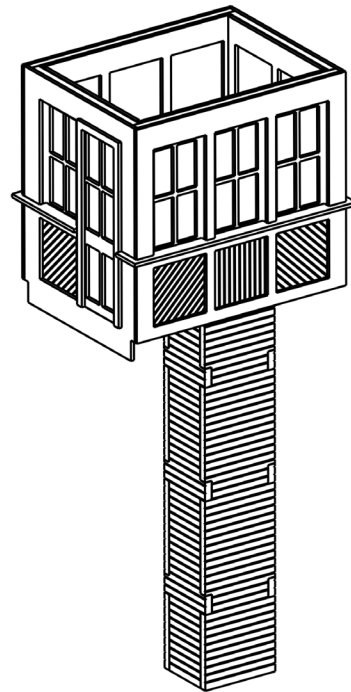
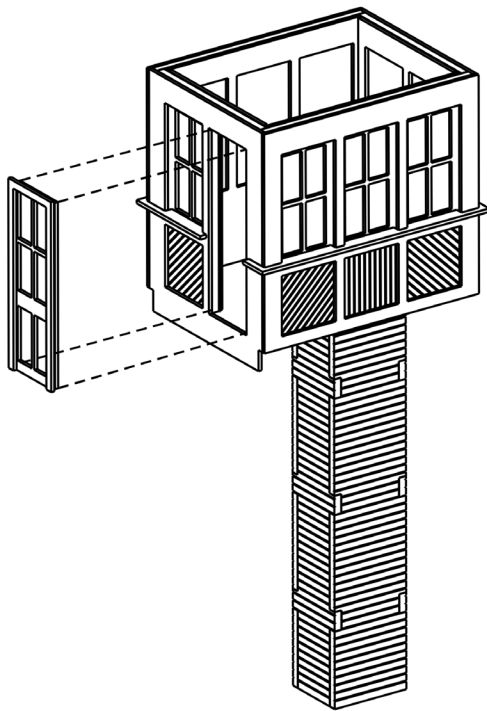
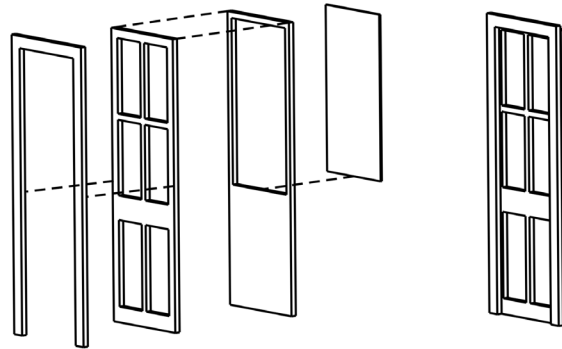
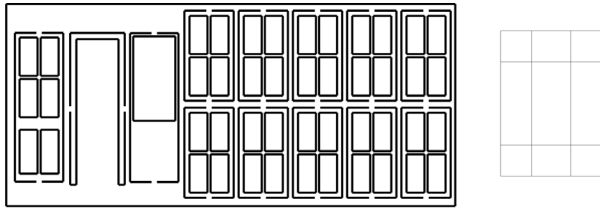
Designed By: T. Warris

August 2008

www.fast-tracks.net

Fast Tracks





Construction Part 8

ELEVATED CROSSING TOWER

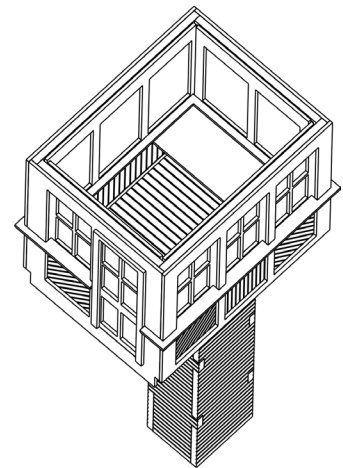
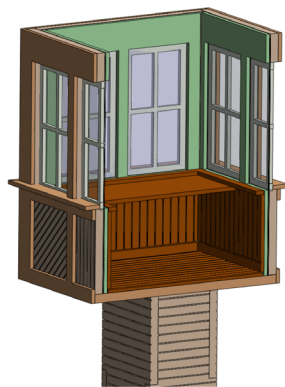
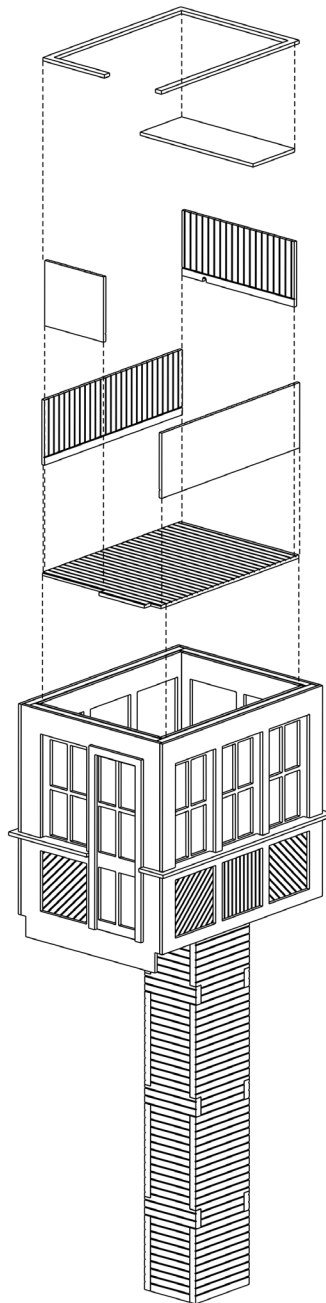
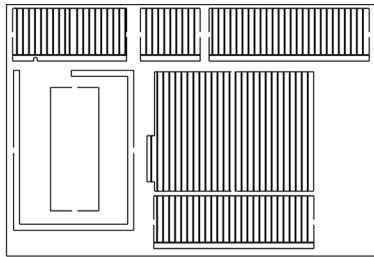
Designed By: T. Warris

August 2008

www.fast-tracks.net

Fast Tracks





Construction Part 9

ELEVATED CROSSING TOWER

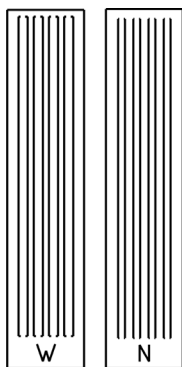
Designed By: T. Warris

August 2008

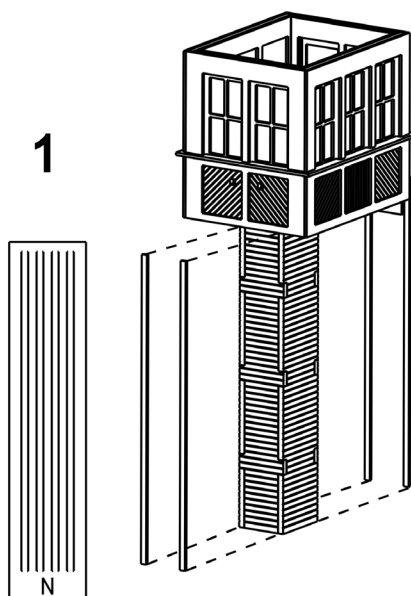
www.fast-tracks.net

Fast Tracks

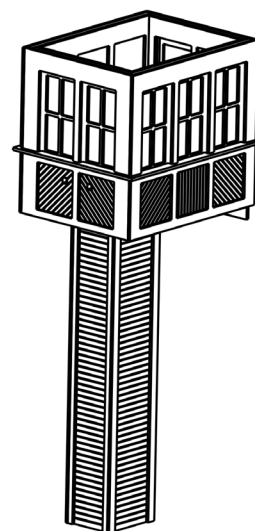
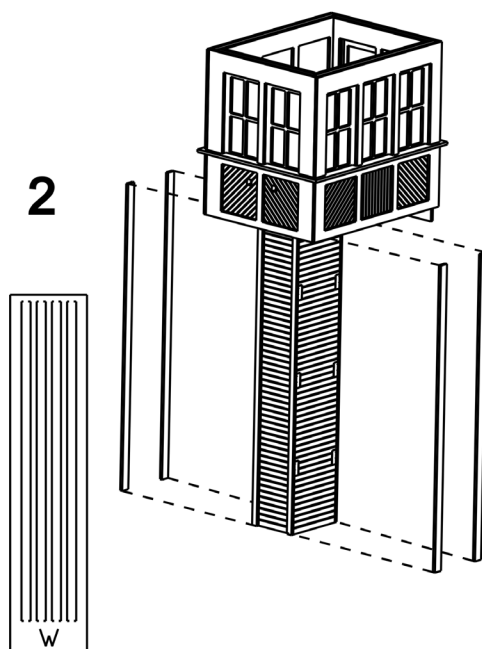




1



2



Construction Part 10

ELEVATED CROSSING TOWER

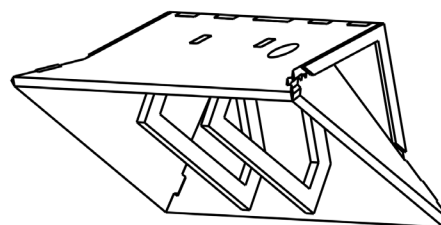
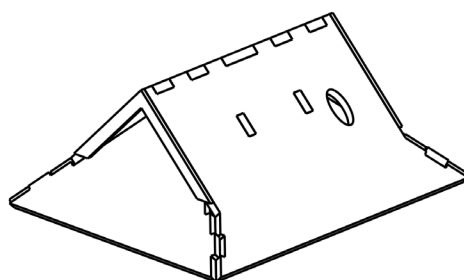
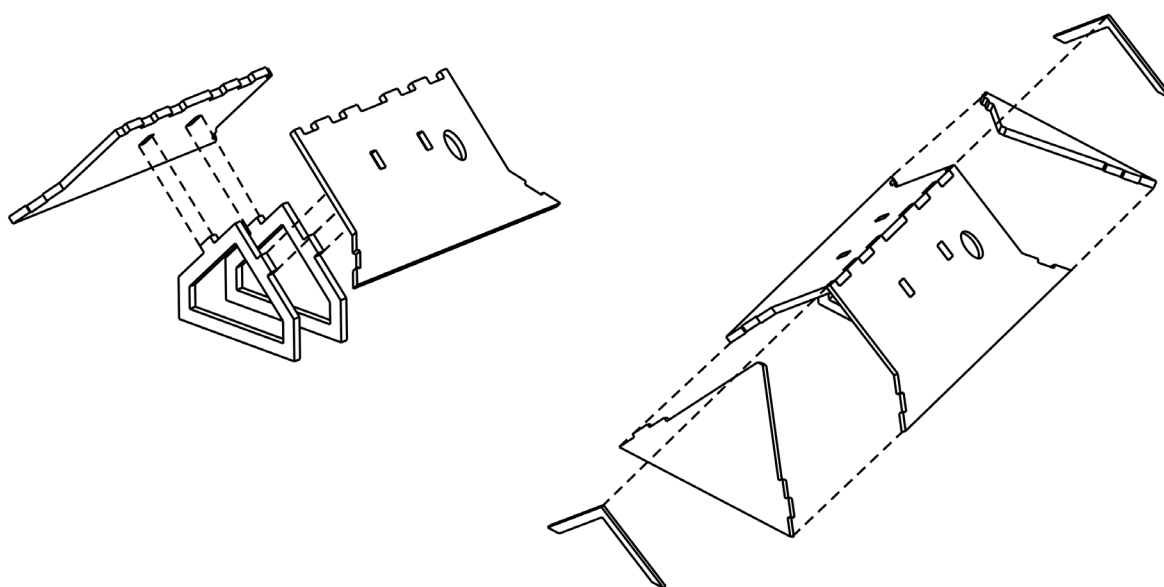
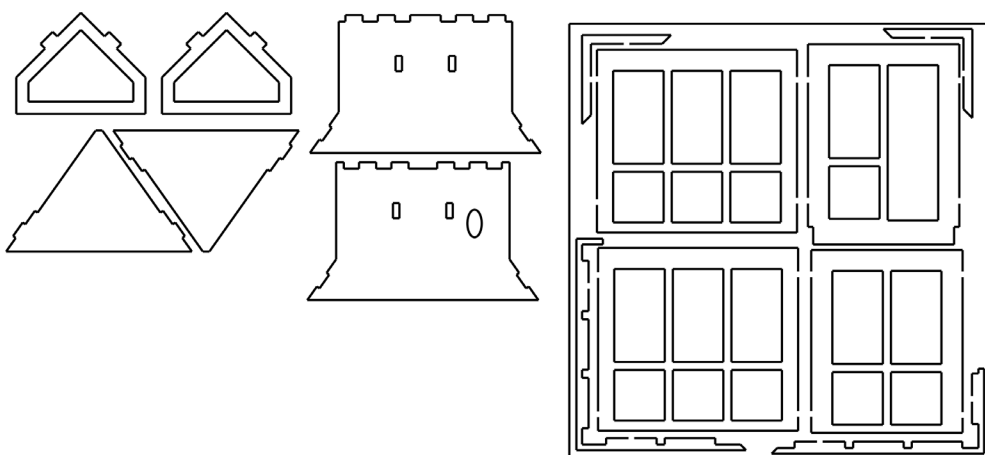
Designed By: T. Warris

August 2008

www.fast-tracks.net

Fast Tracks





Construction Part 11

ELEVATED CROSSING TOWER

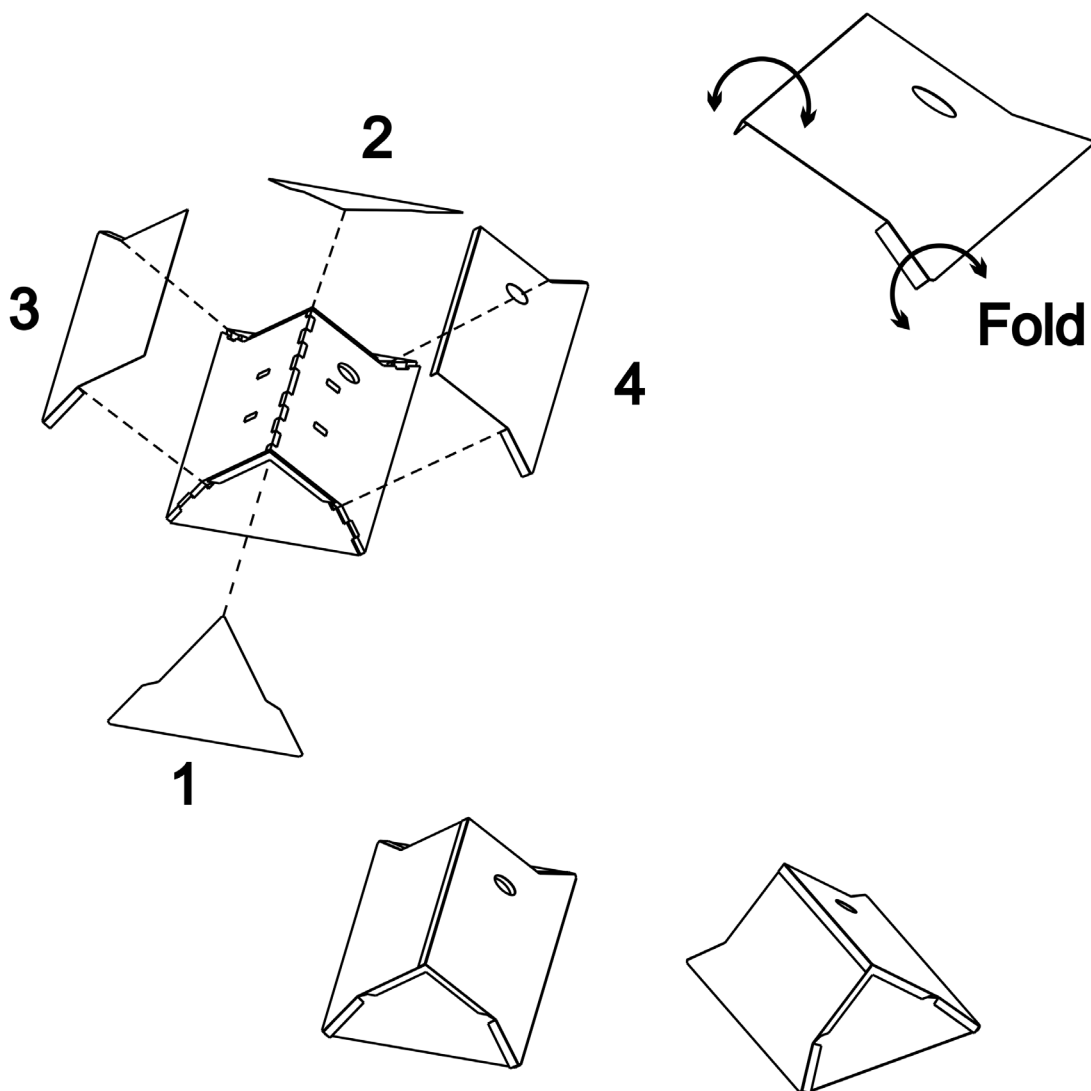
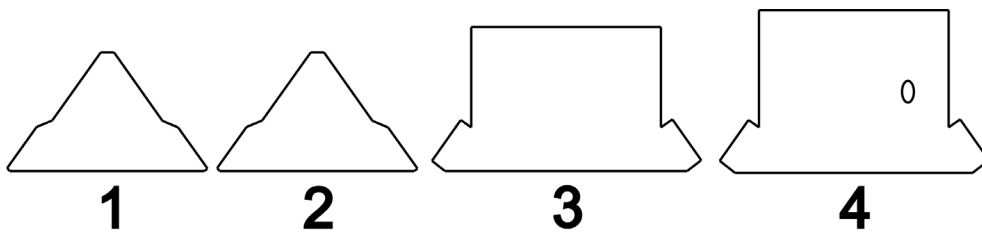
Designed By: T. Warris

August 2008

www.fast-tracks.net

Fast Tracks





Construction Part 12

ELEVATED CROSSING TOWER

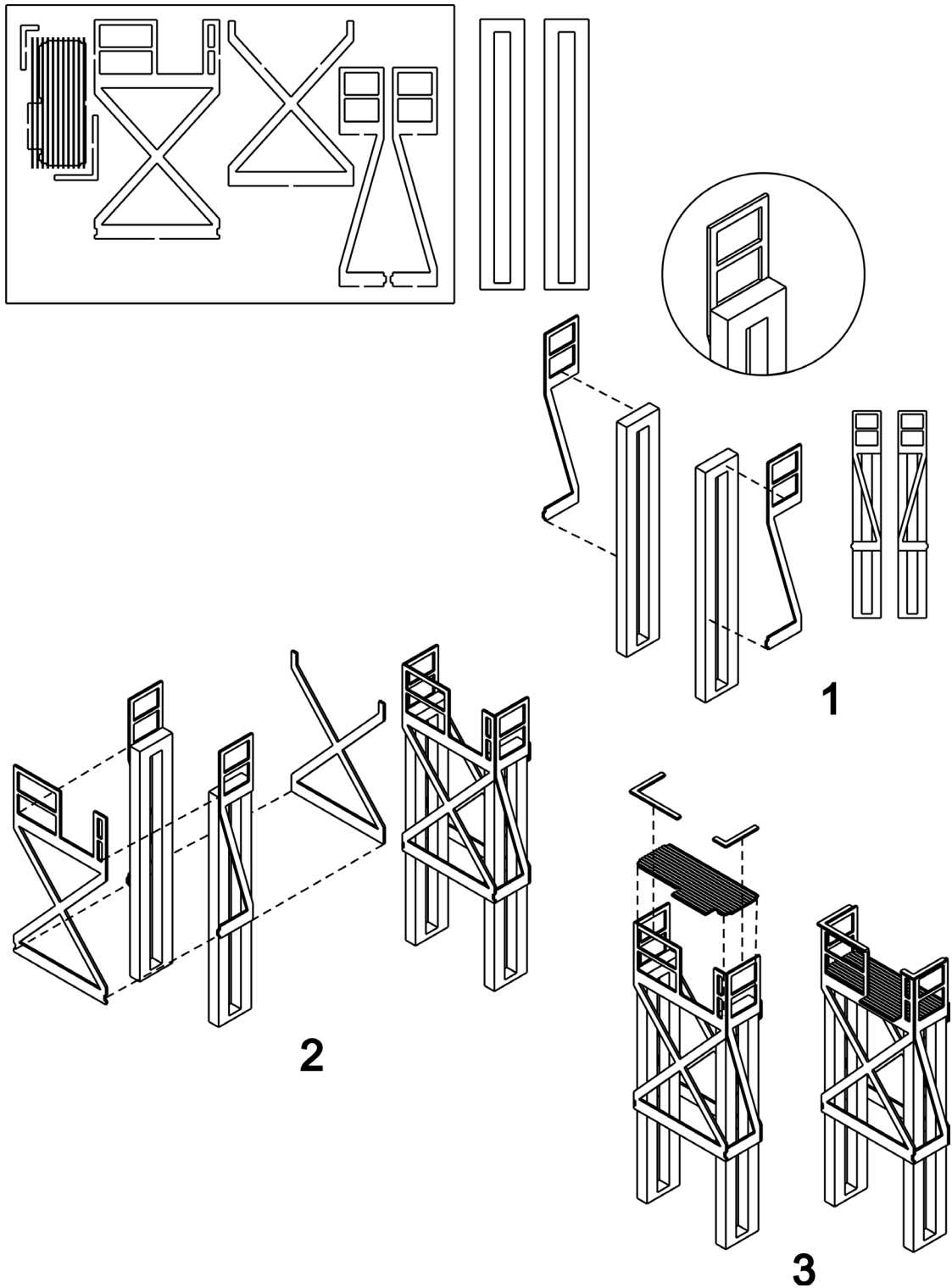
Designed By: T. Warris

August 2008

www.fast-tracks.net

Fast Tracks





Construction Part 13

ELEVATED CROSSING TOWER

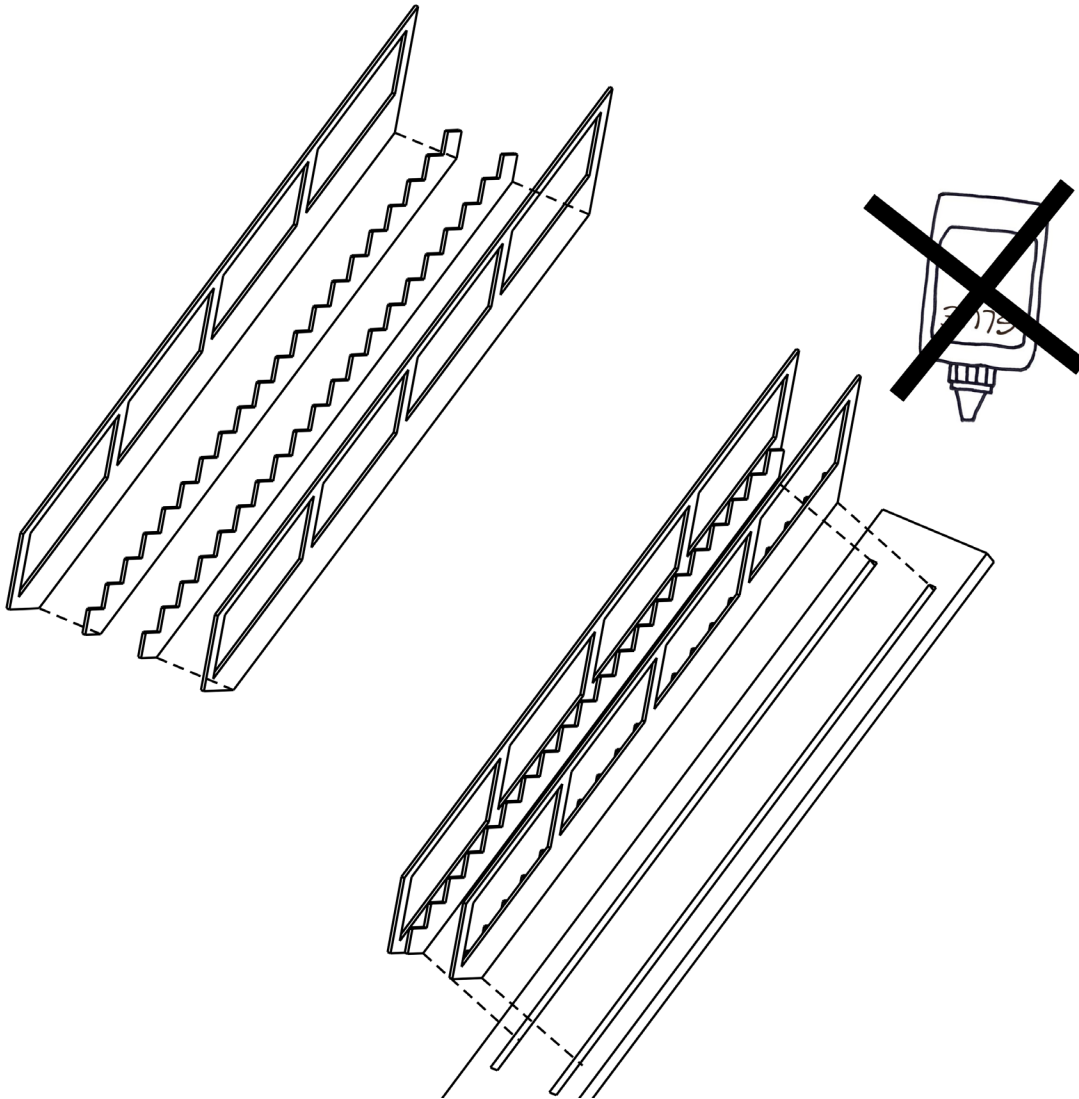
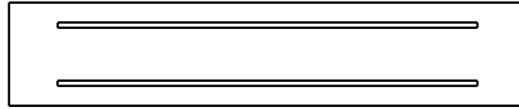
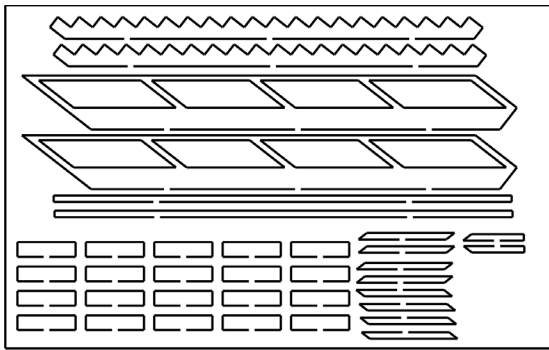
Designed By: T. Warris

August 2008

www.fast-tracks.net

Fast Tracks





Construction Part 14

ELEVATED CROSSING TOWER

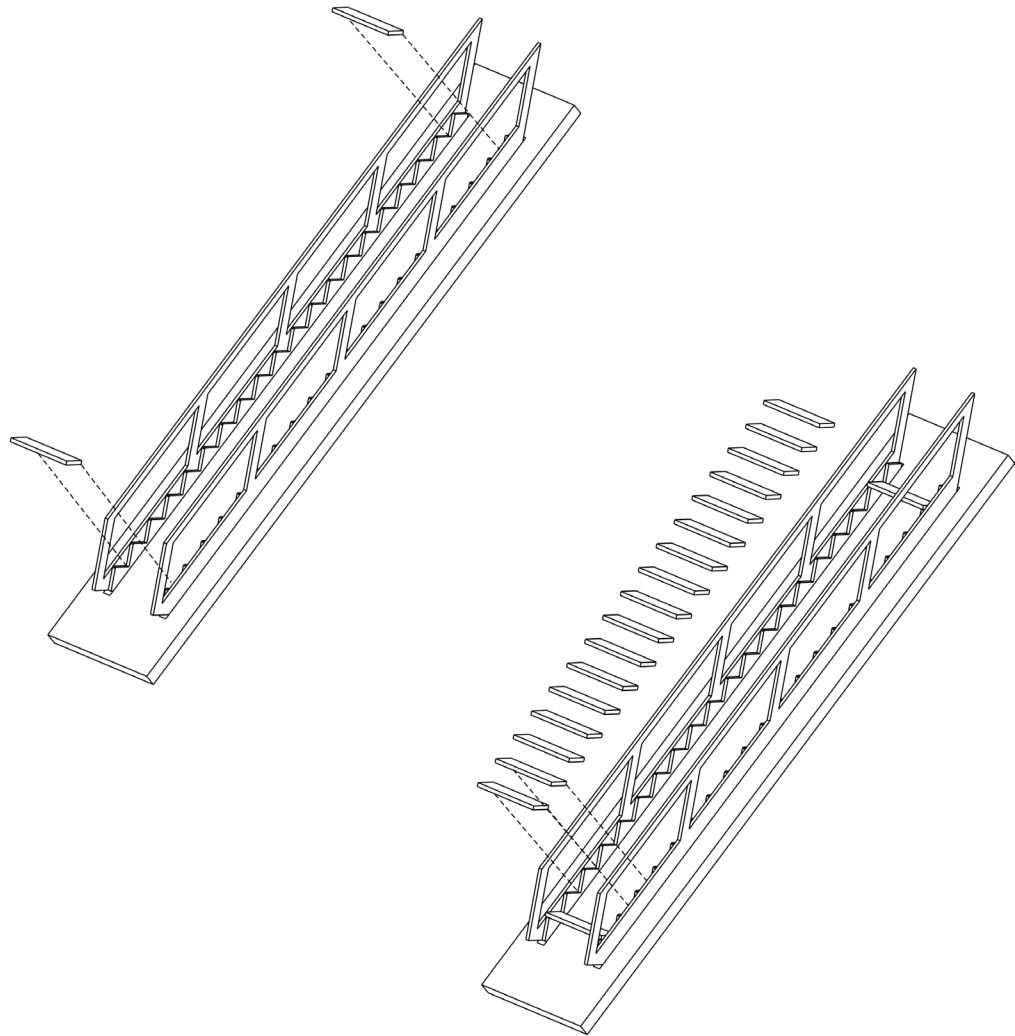
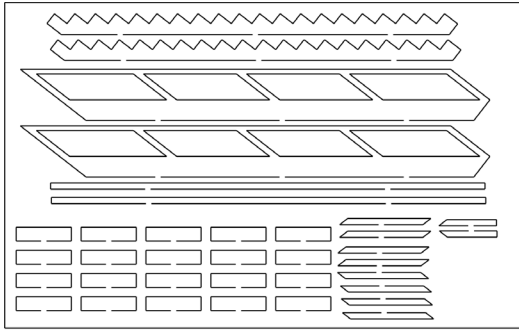
Designed By: T. Warris

August 2008

www.fast-tracks.net

Fast Tracks





Construction Part 15

ELEVATED CROSSING TOWER

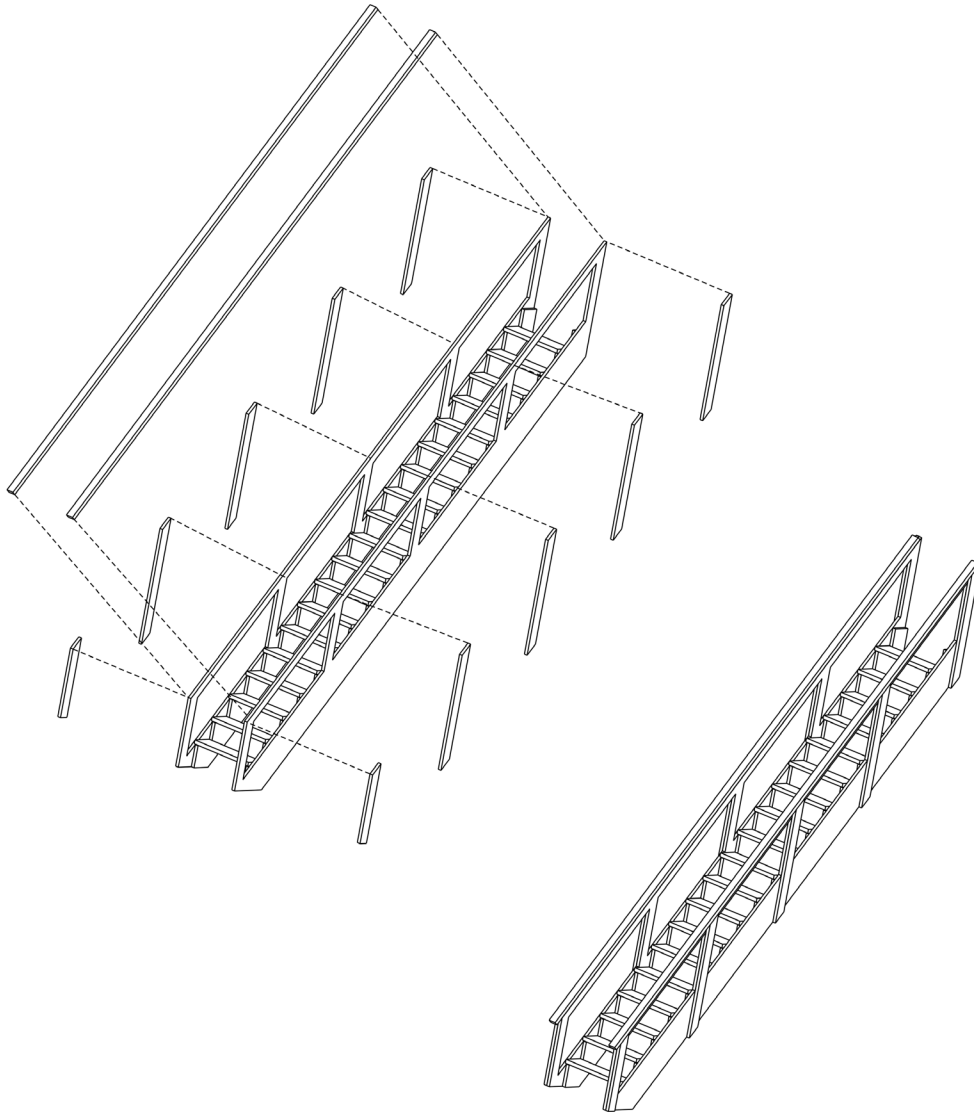
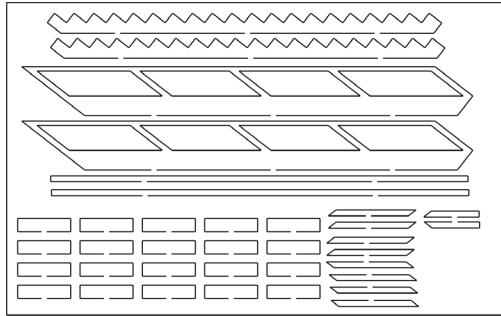
Designed By: T. Warris

August 2008

www.fast-tracks.net

Fast Tracks





Construction Part 16

ELEVATED CROSSING TOWER

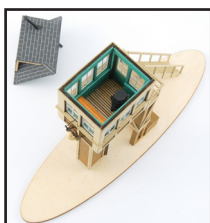
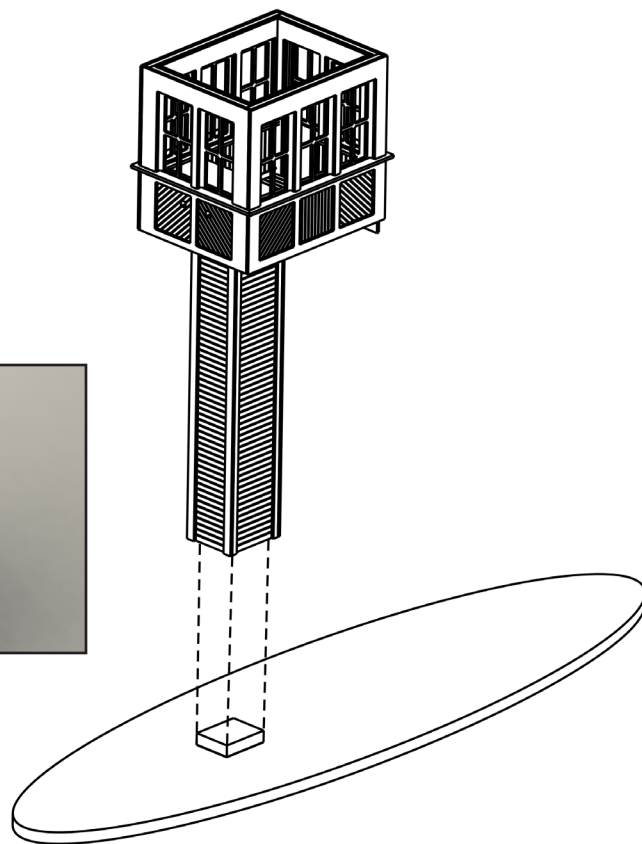
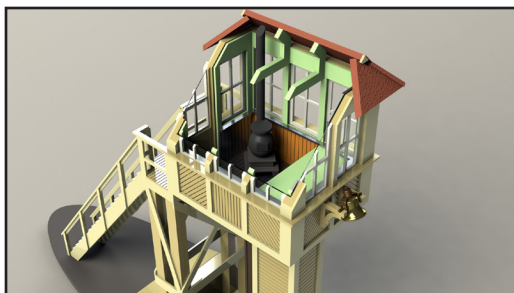
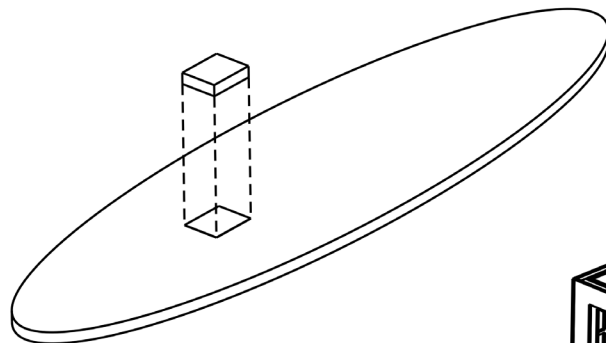
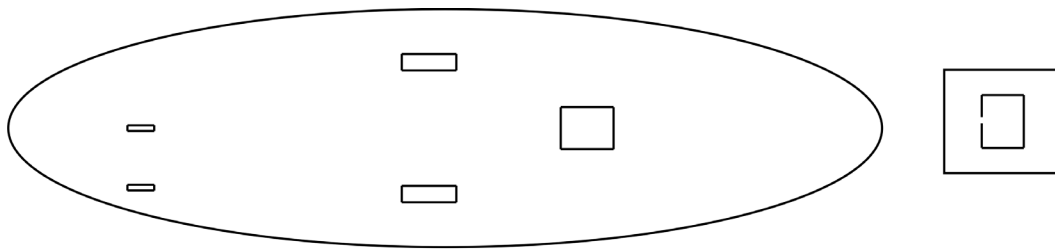
Designed By: T. Warris

August 2008

www.fast-tracks.net

Fast Tracks





Construction Part 17

ELEVATED CROSSING TOWER

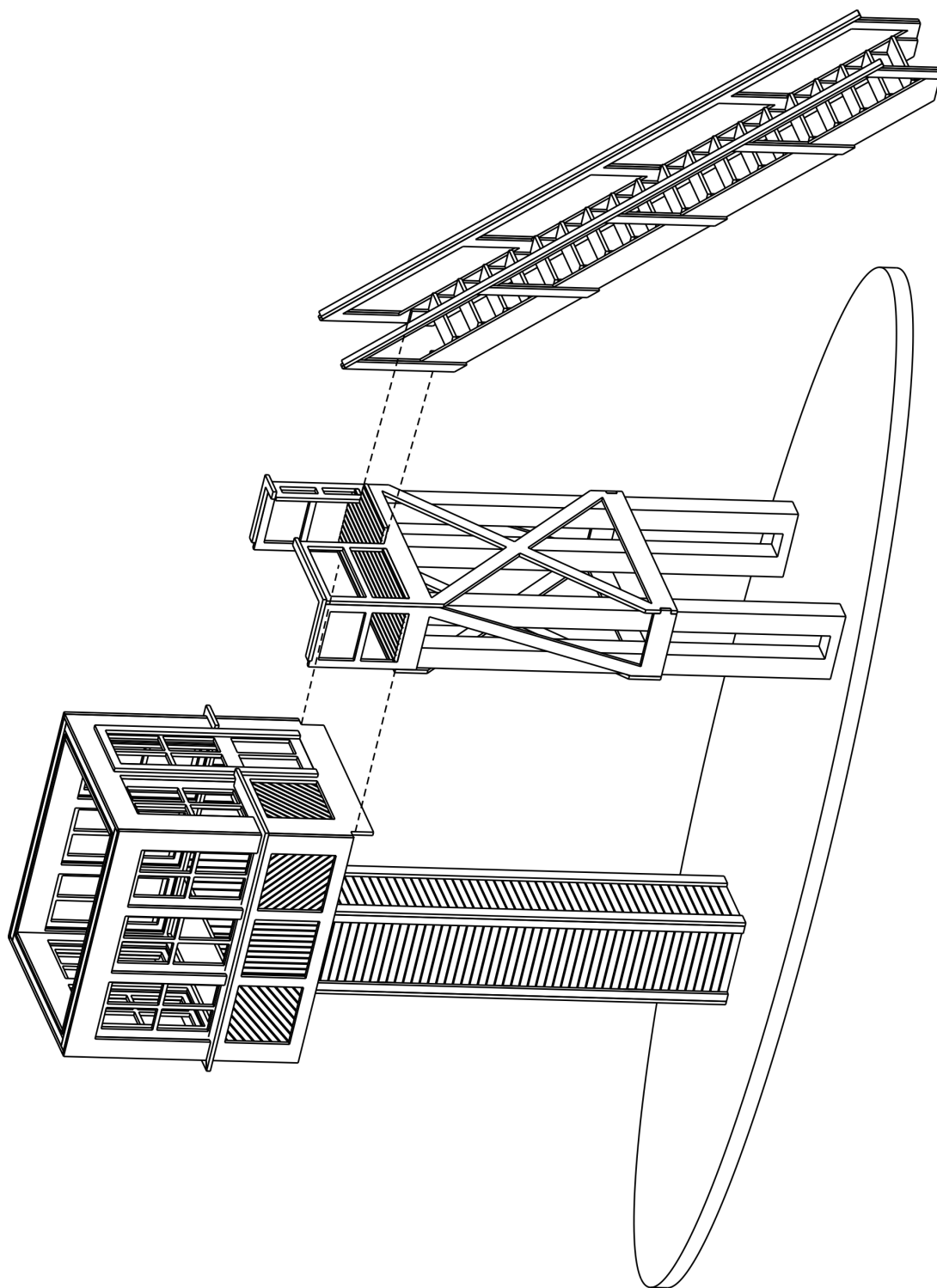
Designed By: T. Warris

August 2008

www.fast-tracks.net

Fast Tracks





Construction Part 18

ELEVATED CROSSING TOWER

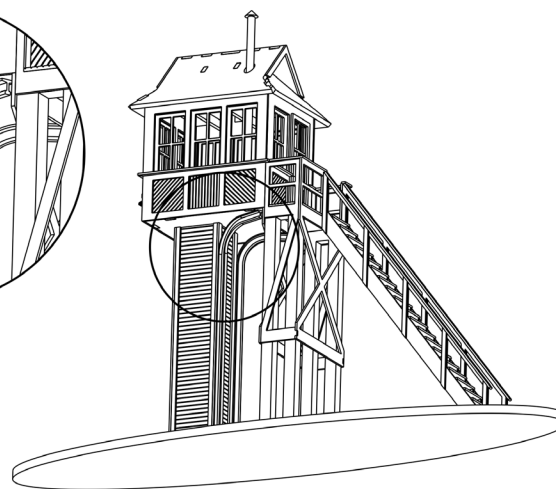
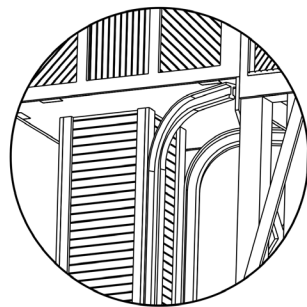
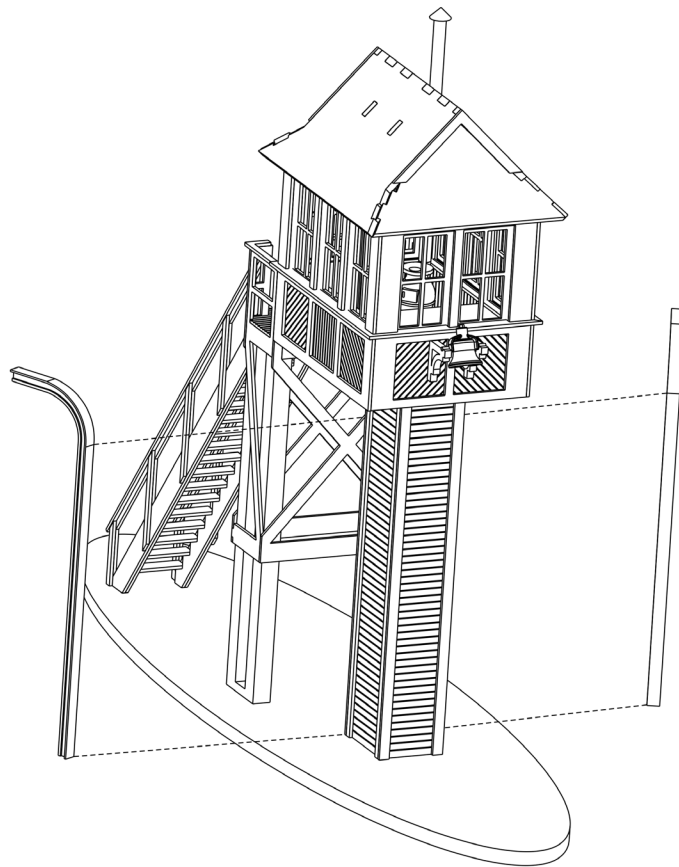
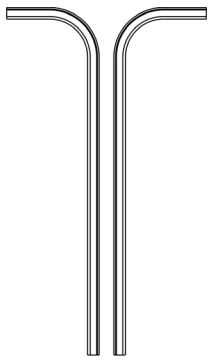
Designed By: T. Warris

August 2008

www.fast-tracks.net

Fast Tracks





Construction Part 20

ELEVATED CROSSING TOWER

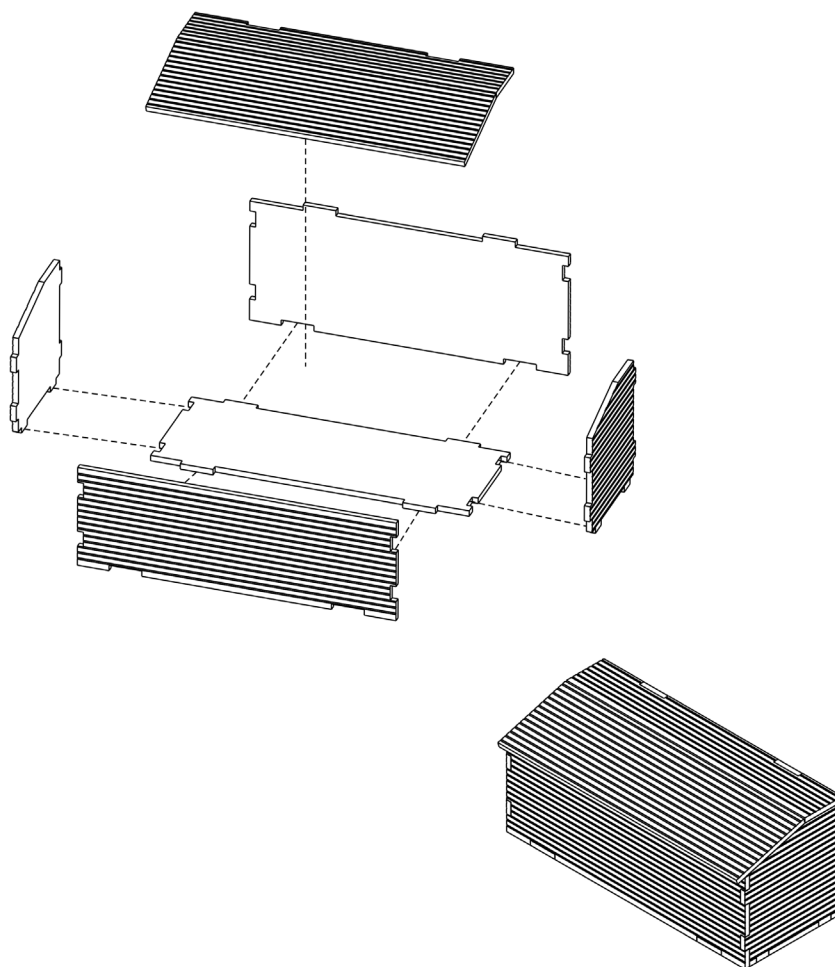
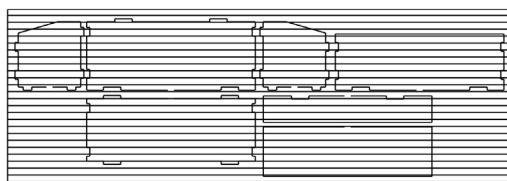
Designed By: T. Warris

August 2008

www.fast-tracks.net

Fast Tracks





Construction Part 21

ELEVATED CROSSING TOWER

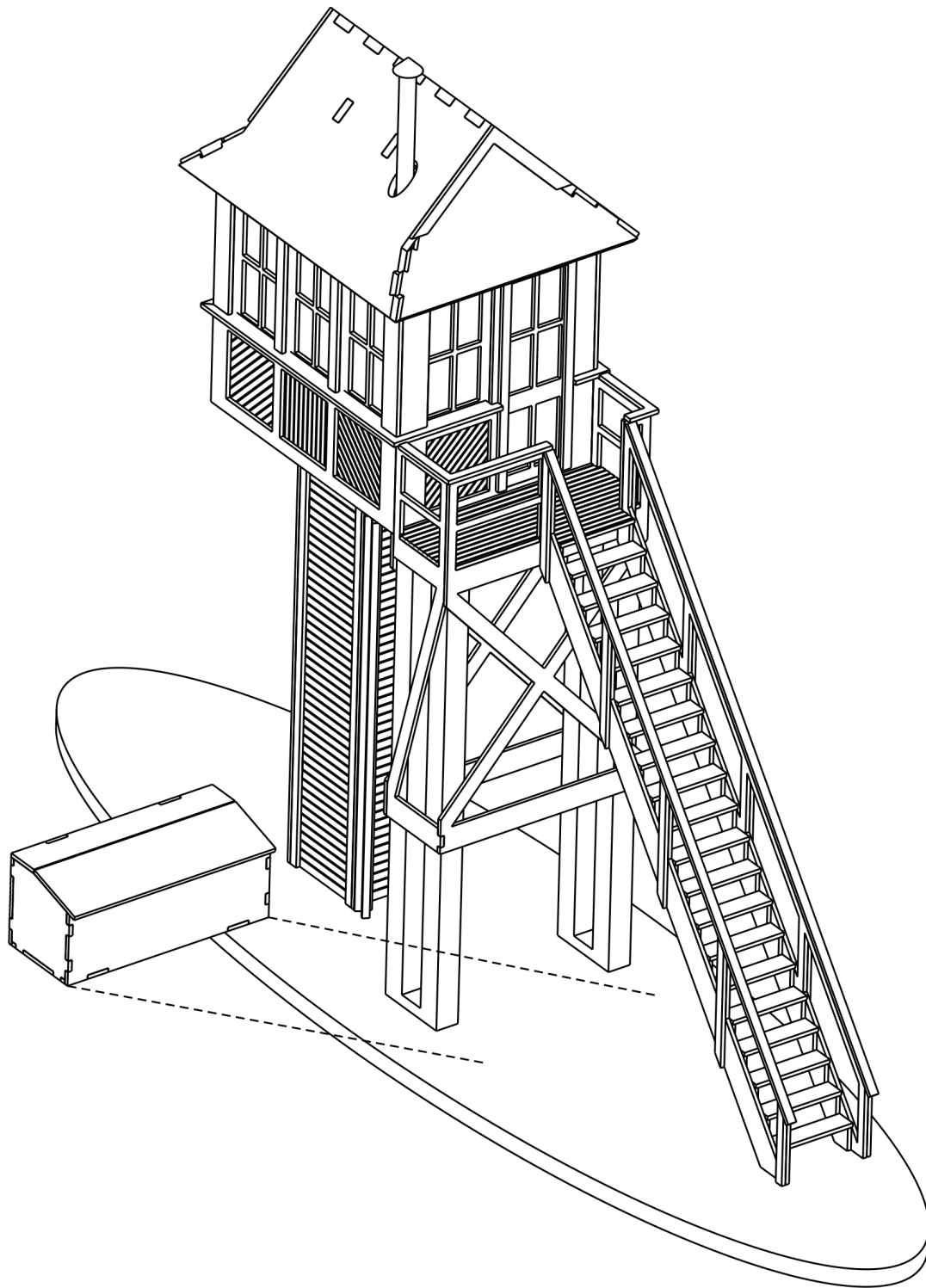
Designed By: T. Warris

August 2008

www.fast-tracks.net

Fast Tracks





Construction Part 22

ELEVATED CROSSING TOWER

Designed By: T. Warris

August 2008

www.fast-tracks.net

Fast Tracks



**CNR Prototype as it stood on
Rydout Street in London, Ontario Canada**



Image Copyright Ian Wilson, Branchline Miniatures - Used with permission



Problems? Questions?

Email us at service@fast-tracks.net

Phone us at 1-888-252-3895